

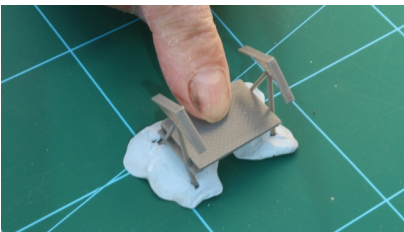
Jumble Lane Printing 3D printed market stalls

Tools required are small craft knife, Blu Tac and cutting mat. Materials required are Deluxe Materials - Plastic Magic glue or similar and paint as required.

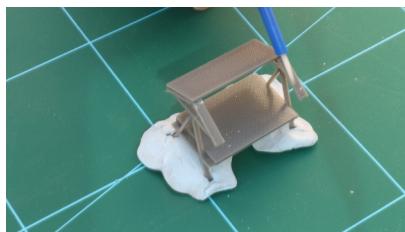
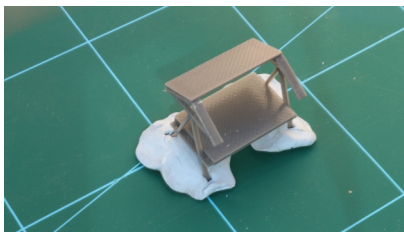
1. Using the Blu Tac to support the end frames, stand the frames apart at a distance equal to the length of the table.



2. Brush a small amount of glue on the shelf part of one of the frames and sit the table on the shelf and hold still for a few seconds. Repeat this for the other end of the table.



3. Offer up one of the canopy tops on the roof spar and check position prior to applying glue. When you are happy with the position glue the canopy at both ends. Glue along the ridge and offer up the second half of the roof sealing the join between them. Run glue between the roof and the A frame. At all times ensure that the stall is kept level and square. This will help the stall to sit right in its final position on your layout or diorama.



Once the glue is dry and cured you can paint your model in the appropriate colours.

Happy modelling.



Please note: We constantly strive to improve our products. We have several versions of this model and the table now has notches cut out in the shape of the A frame which makes assembly easier. This is a very tight fit and is made easier by applying the glue to the notches then sliding the table onto the A frame.